



Biological

- IBIC (optimized immediate bone-to-implant contact)
- FairOne™ FairWhite™: taking the biological width into consideration
- FairTwo™: “virtually one piece” due to a conical internal connection
- special surface roughness for mucosal apposition
- adsorbable CaP coating for accelerated osseointegration (BONIT®)
- implant in the shape of a tooth root
- implant and abutments made of medical grade 4 pure titanium or zircon
- instruments for minimally invasive surgical procedures



Reliable

- implant shape supports borderline indications (low bone quality and height, narrow situation, sinus lift, bone spreading)
- drills self-centring and extremely smooth running
- instrumentarium for hard and soft bone
- wide range of sizes to support indications best from Ø 2.8 to 6.0mm and from length 7.5 to 17.5 mm
- proven, excellent fabrication quality without residues
- high-strength zircon (4-point bending strength 2.000 MPa)



Economical

- one phase treatment with FairOne™, FairWhite™ or FairTwo™ using the insertion abutment significantly reduces the overall treatment costs in comparison to two phase treatment regard to chair times, material costs and laboratory work
- reasonably priced treatment options are available in the case of two phase treatment using LOCATOR® or One-Piece abutments
- the quiet-running drills have very high service lives and are excellent for collecting bone chips
- only one system for almost all indications



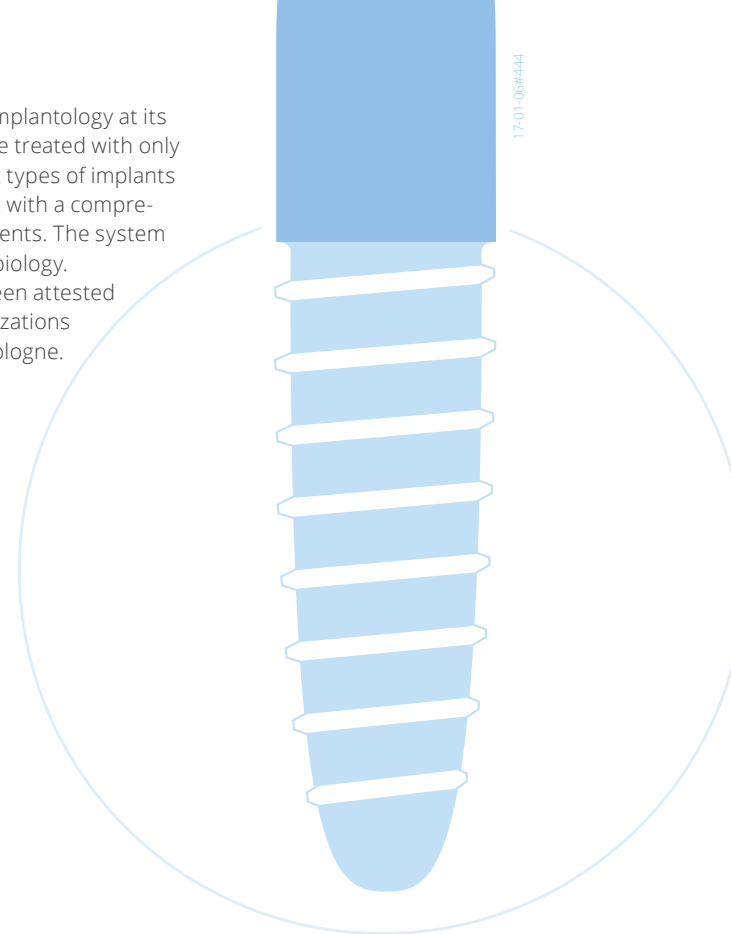
Fair

- competent advice
- highest fabrication quality
- systematic, continuously developed

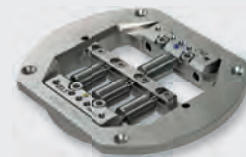
The special system

Aim of FairImplant™ is to support implantology at its best. Almost all indications could be treated with only one system. That includes different types of implants made of pure titanium and ceramic with a comprehensive coordinated set of instruments. The system is absolutely orientated to human biology. Premium production quality has been attested by serious and independent organizations like BDIZ EDI or the University of Cologne.

The system represents more than seventeen years of development in close cooperation with dental education groups.



exocad
3shape



via phone:
+49 (0)40 25 33 055-0



via e-mail:
info@fairimplant.de



via fax:
+49 (0)40 25 33 055-29



via post:
Kieler Str. 103-107
25474 Bönningstedt
Germany

FairImplant GmbH

Kieler Strasse 103-107 · 25474 Bönningstedt · Germany
Tel +49 (0)40 25 33 055-0 · Fax +49 (0)40 25 33 055-29
info@fairimplant.de · www.fairimplant.de / www.fairimplant.com

Biological • Reliable • Economical • Fair



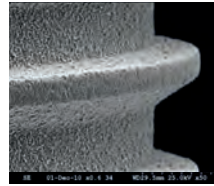
The special system

- outstanding treatment options
- very high primary stability
- titanium and zircon

Conception

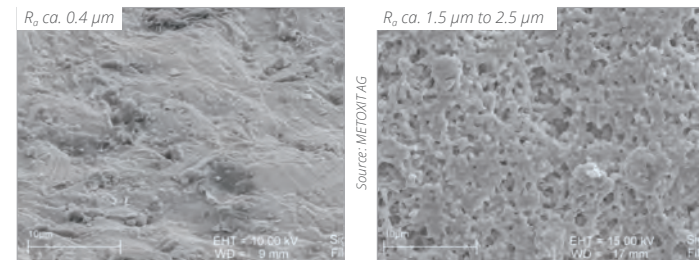
FairImplant™ is absolutely oriented to human biology

- ✓ covered and immediate implantation are performed with only one comprehensive and coordinated instrumentarium
- ✓ **outstanding primary stability** through root shape and perfectly fitting bed preparation
- ✓ maximum IBIC for accelerated osseointegration
- ✓ the titanium surfaces are coated with Bonit® which has been proven to accelerate the healing process
- ✓ the ZircaPore® surface of FairWhite™ is manufactured without crack induction as sandblasted treatments; result is a comparable good osseointegration as like proven titanium surfaces



SEM: perfect fabrication quality and no residues
(Photo: University of Cologne, Germany, Implant study 2011)

Sandblasted zirconia surface vs. ZircaPore®



sandblasted zirconia surface

ZircaPore® surface

Quality made in Germany

FairTwo™-insertion: initial wetting of the haematophilic surfaces.

perfectly matched shape of the preparation drills = exceptional primary stability

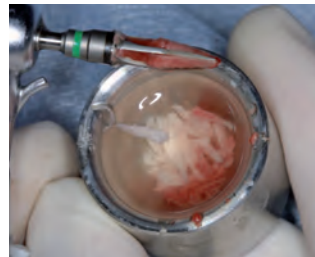
Surgery

One system for one-phase and two-phase implantation

FairImplant™ provides advantage regarding surgery and treatment costs

- ✓ only one set of instruments for one phase and two phase treatment with implants of pure titanium which cover almost all indications
- ✓ instrumentarium supports minimally invasive treatments
- ✓ very quiet-running and self-centring drills with exceptional working life
- ✓ the uniform preparation allows to change the type of implant even during the operation, for example if the quality of the bone is different than estimated
- ✓ instruments for all bone qualities such as dense drills, screw taps and osteotomes
- ✓ the very special drill design enables it to harvest autologous bone during the bed preparation without an additional removal site

In everyday life, you will quickly notice that the FairImplant™ system has been designed by practitioners.



Prosthetics

FairOne™ / FairWhite™: as easy as a tooth stump

Both implants have a prosthetic head. Impression taking could be done without preparation. If a preparation is necessary, the titanium or zirconium head can be treated like a tooth stump.



FairOne™ sizes: Ø 2.8 to 6.0 mm; length 8 to 16 mm
FairWhite™ sizes: Ø 3.7 to 5.4 mm; length 9 to 14 mm

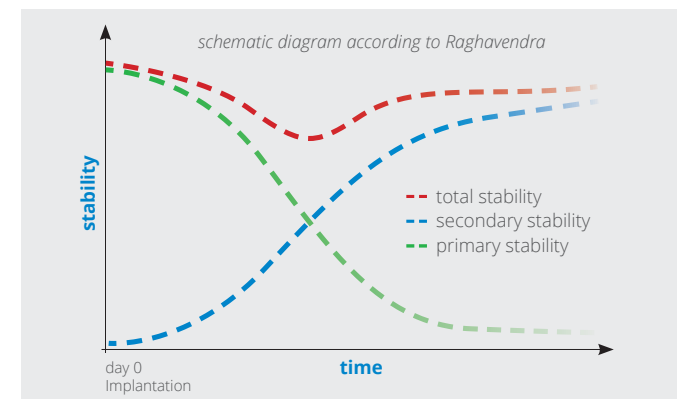
FairTwo™ with insertion abutment

Conical interface to the abutment with a patented rotation protection and platform switching.

All implants includes an insertion abutment which allows safe removal out of the package and an easy insertion. The insertion abutment can be used well as for bite registration or for (temporary) provisioning.

FairTwo™ supports CAD/CAM processes, e.g. exocad, 3Shape, cerac and PreForms.

FairTwo™ sizes: Ø 3.5 to 6.0 mm; length 7.5 to 17.5 mm

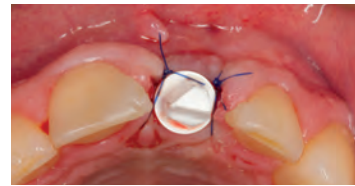


very high primary stability and minimal distance to optimise stability during critical phase

Metal free implants

FairWhite™: the metal free ceramic option

- patented surface ZircaPore®
- outstanding primary stability
- high strength zircon and particularly fracture stability shape



Implantation can be so easy.

SCAN ME:
short-video (ca. 2 min.) „Implantation FairWhite™“

FairWhite™ sets the standard

1. preparable prosthetic head
2. high strength due to a ceramic-fitting shape
3. self-tapping thread and form-congruent drill for best IBIC
4. ZircaPore® surface for improved bone attachment



matching shape ensures primary stability and minimum bone distance

FairWhite™ complet-tray